

2002 - LISS, I.

A (K, 1982) DNA
 40,000 TH DNA
 N E N A I DNA
 P (DNA
 1986). F E (M
 P 1999).
 (M, 1998). N
 M, N
 N E (1998). 15%,
 I N E N (1998). N E (R
 M, 1996; T, 1998). E
 (A C S P DNA
 1973).
 DNA (DNA)
 T E G : DGES; G : PB93-0558; G
 G C ; G : COF1999/019.
 G : A M G , B G
 F B : L L , 382/1 T
 S E @
 (C, 1997),
 (S, 2000),
 R 275 2000; 17 J. 2002.
 G E M A
 DOI 10.1002/ .10168
 P I S ()

(C. R., 1996). S. N. E. I. DNA. E. S. C. N. E. (T., 1998). F. DNA. N. A. (C. R., 1996; R., 1998; R., 1999).

A. N. E. A. P. F. P. A. E. I. DNA. P. E. A.

MATERIALS AND METHODS

Samples

I. 299. P. 43. G. (N. S.) B. A. E. N. P. (NP), 84. C. P. (CP), 78; S. P. (SP), 137. 84. 59. (P. 2000). P. 54. P. (C. R., 1996). G. C. I. G. T. 92. S. (1998). (GA). P. (IP). A. IP. A. (NA) DNA. 85 B. A.

Population comparisons

~~Figure 1~~ AMO A ~~Figure 1~~ (E... .., 1992),



Author Proof



Author Proof

~~h T. Th, T4 h~~
~~h h T5 h~~
~~h h h h h h~~
~~h E h h h~~
~~h h h h h h~~
~~h h h h h h~~
~~h h h h h h~~

Population affinities

~~h AMO A h h h~~

MITOCHONDRIAL DNA IN ATLANTIC E ROPE

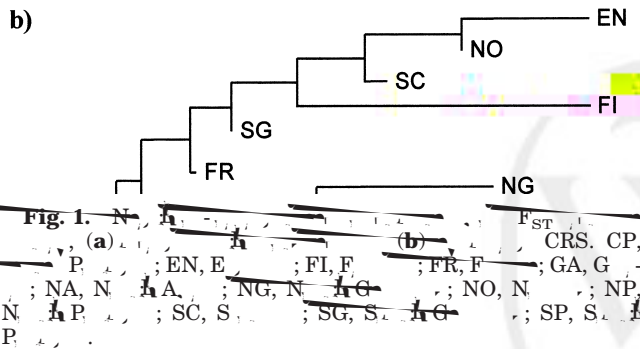
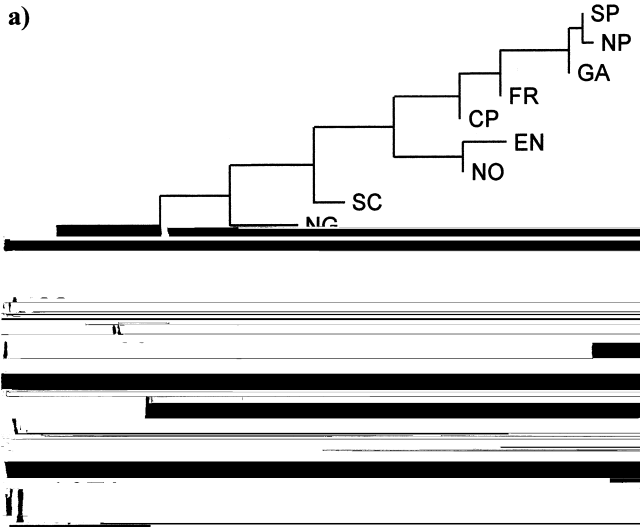


Fig. 1. (a) ... (b) ... CRS, CP, ... EN, E ... FI, F ... FR, F ... GA, G ... NA, N ... A ... NG, N ... G ... NO, N ... NP, ... SC, S ... SG, S ... SP, S ...

	FI	NO	SC	EN	NG	SG	FR	GA	NP	CP	SP	NA
FI	0.0024	0.0042	0.0018	0.0056	0.0029	0.0007	0.0025	0.0064*	0.0071*	0.0043	0.0061*	0.0061*
NO	0.0023	0.0007	0.0008	0.0000	0.0024	0.0012	0.0010	0.0011	0.0018	0.0002	0.0010	0.0088***
SC	0.0057*	0.0030**	0.0018**	0.0012*	0.0018*	0.0003	0.0010	0.0020*	0.0031**	0.0008	0.0021*	0.0063***
EN	0.0049*	0.0007	0.0032***	0.0029*	0.0019	0.0016	0.0016	0.0013	0.0028*	0.0005	0.0024	0.0083***
NG	0.0016	0.0010	0.0008*	0.0022**	0.0019	0.0003	0.0022	0.0024	0.0046*	0.0002	0.0029	0.0056**
SG	0.0020	0.0022**	0.0017**	0.0033**	0.0014	0.0000	0.0000	0.0019	0.0019	0.0003	0.0011	0.0044***
FR	0.0040*	0.0022**	0.0017**	0.0030**	0.0023	0.0014*	0.0015*	0.0005	0.0007	0.0000	0.0005	0.0054**
GA	0.0042*	0.0029***	0.0020*	0.0048***	0.0051***	0.0009	0.0014*	0.0016*	0.0000	0.0000	0.0000	0.0083***
NP	0.0040*	0.0015*	0.0012*	0.0020*	0.0003	0.0003	0.0009	0.0000	0.0000	0.0000	0.0000	0.0086***
CP	0.0032	0.0015*	0.0012*	0.0020*	0.0003	0.0003	0.0009	0.0000	0.0012	0.0006	0.0000	0.0067**
SP	0.0040*	0.0026*	0.0021**	0.0044**	0.0032**	0.0003	0.0014*	0.0017*	0.0012*	0.0006	0.0000	0.0080***
NA	0.0094***	0.0077***	0.0071***	0.0084***	0.0073***	0.0053***	0.0048***	0.0057***	0.0054***	0.0055***	0.0055***	0.0080***

Within-haplogroup population affinities
 Sequence matches distribution within haplogroups.

T3 AMO A T 3
 CRS (87.3 3.0%) E
 H*, J, K, T, T1, 5, 10.0 2.5%. O, 2.7 1.6%

* 0.05.
 ** 0.01.
 *** 0.001.



Author Proof





Author Proof

I (6.8%) N h
 A N h HP 23% H
 N h 10% (G h
 F 6 A 1983), 13% S h
 S h T M N h
 (16%) N h P h A
 (2.3%) A h A
 h h 35% C R (14%) P h
 (1996), 27% h P (B , 1998).
 I h S h N h
 h h 13% A h (51%)
 h h A h (T , S
 h M h
 A N h h P h

ACKNOWLEDGMENTS

H. B. DGES
 (PB93-0558) G C (COF1999/
 019) M.C. P.

() ()

		RFLP							
		1	1	1	11				
2	3	4	4	7	8	0	0	0	2 4
	3	5	2	5	0	9	3	3	8 3 7
7	4	9	1	7	2	9	9	9	7 0 6
3	9	2	6	7	5	4	4	7	3 8 6

S

H SI

GA NP CP SP

H*
CRS

Author Proof



~~A, C, S, P, B, A, S.A. 197 315.~~
~~D, O, S, I, A, G, F, N, H, A,~~
~~R, T, M, D, O, O, P, J, G~~

LITERATURE CITED

~~A, C, S, LL. 1973. A~~
~~E, I, R, C,~~
~~D, 348, 358.~~
~~A, S, B, AT, B, BG, B, MHL, C,~~
~~AR, D, J, E, IC, N, DP, R, BA, S, F,~~
~~S, PH, S, AJH, S, R, IG. 1981. S~~
~~290:457, 465.~~
~~B, I. 1998. E P, M, I: B~~
~~I, M, B, R, MA, M, JL, P,~~
~~P, B, A, S.A. 1, 120.~~
~~B, J, S, J, C, F, P, M, P, C, D.~~
~~1995. H, DNA,~~
~~A, B, A, H, G, 59:63, 81.~~
~~C, F, L, R, MG, D'A, R, F, A, D, L, G, C,~~
~~A, GF, R, 2001. M DNA, RFLP~~
~~S, I, J, L, M, 114:229, 231.~~
~~C, S, LL, M, P, P, A. 1994. T,~~
~~P, P,~~
~~C, S, T, A, E, L, S, B, AS,~~
~~DC. 1995. A, DNA, A,~~
~~A, J, H, G, 57:133, 149.~~
~~C, D, C, F, M, E, P, L, A, B, E, B,~~
~~J. 1997. M, DNA,~~
~~A, E, H, G, 99:443, 449.~~
~~C, R, HB, M, A, R, MB, H, G, L, MS,~~
~~C, T, A, P, S, B, J, S, BC. 1996.~~
~~G, I, P,~~
~~A, H, G, 60:331, 350.~~
~~R, MA. 1998. E C, E, B, I:~~
~~B, I, M, B, R, MA, M, JL,~~





Author Proof